

Virginia Homes

Building Systems

Saltbox Cape





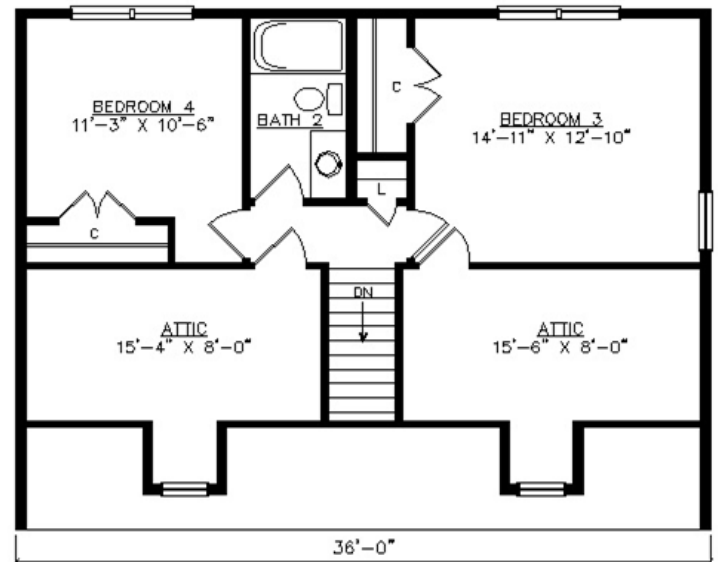
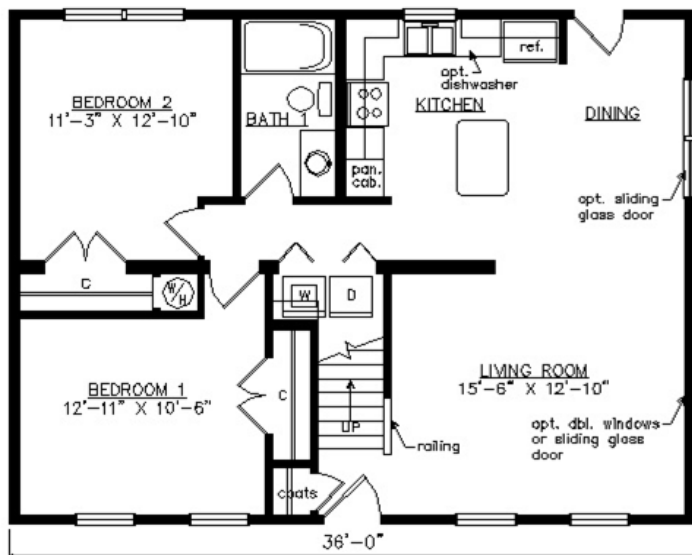
SMALLWOOD SALTBOX CAPE

28'1" x 36'

1505 SQ. FT. (FINISHED) / 309 SQ. FT. (UNFINISHED)

BEDROOMS: 4 BATHS: 2

SHOWN WITH OPTIONAL PORCH,
CRAFTSMAN DOOR AND DORMERS



Virginia Homes
Building Systems

www.virginiahomesbuildingsystems.com

A Division of Modular Building Systems of PA



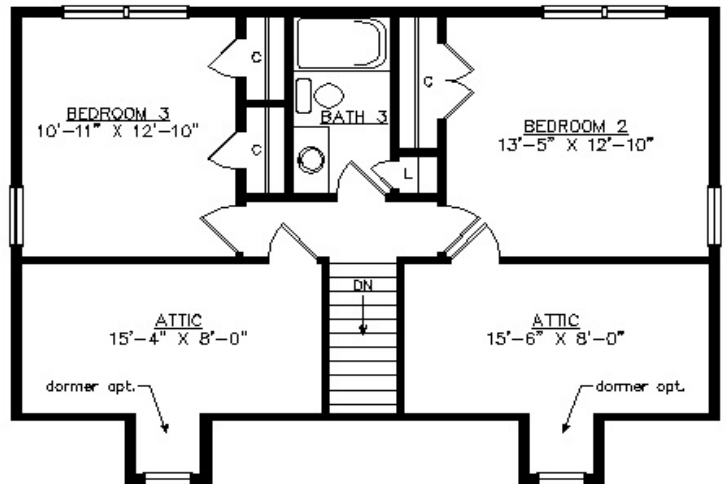
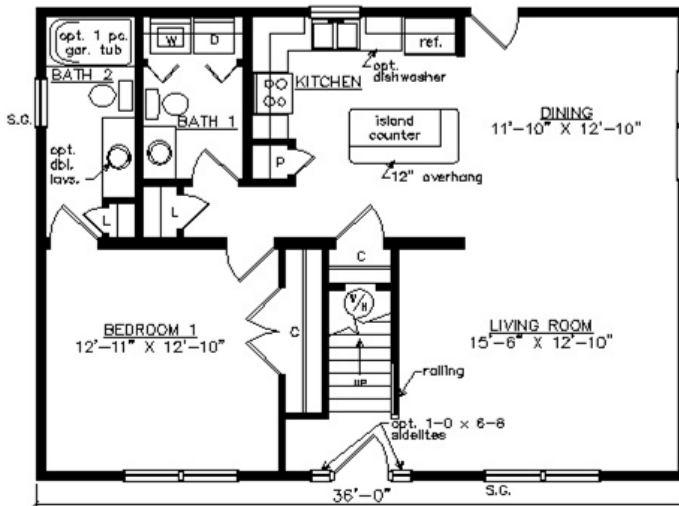
SHENANDOAH SALTBOX CAPE

28'1" x 36'

1505 SQ. FT. (FINISHED) / 309 SQ. FT. (UNFINISHED)

BEDROOMS: 3 BATHS: 3

SHOWN WITH OPTIONAL ON SITE BUILT PORCH,
FANLITE DOOR AND DORMERS



Virginia Homes
Building Systems

www.virginiahomesbuildingsystems.com

A Division of Modular Building Systems of PA



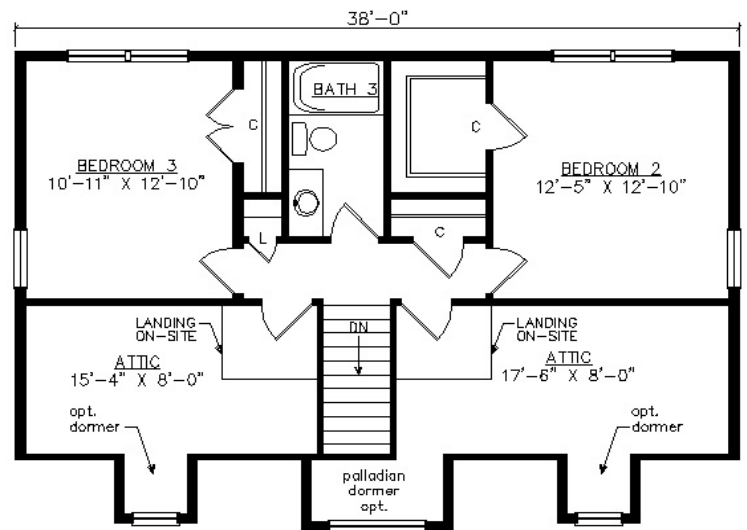
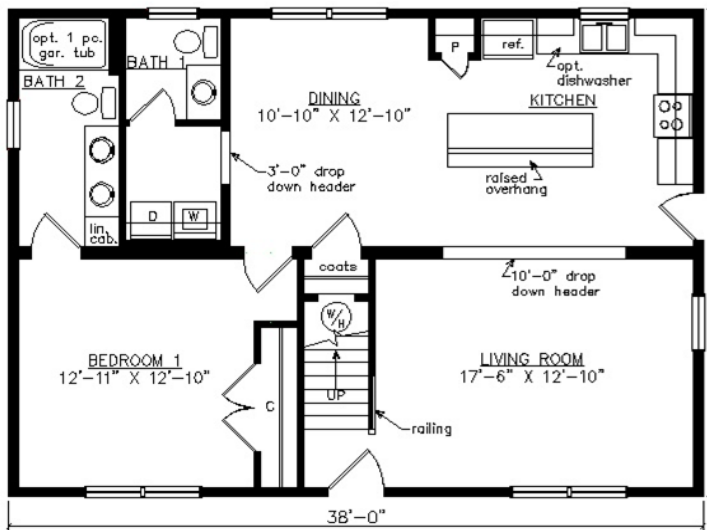
PITTSYLVANIA SALTBOX CAPE

28'1" x 38'

1588 SQ. FT. (FINISHED) / 337 SQ. FT. (UNFINISHED)

BEDROOMS: 3 BATHS: 2.5

SHOWN WITH OPTIONAL PORCH,
FANLITE DOOR AND DORMERS



Virginia Homes
Building Systems

www.virginiahomesbuildingsystems.com

A Division of Modular Building Systems of PA



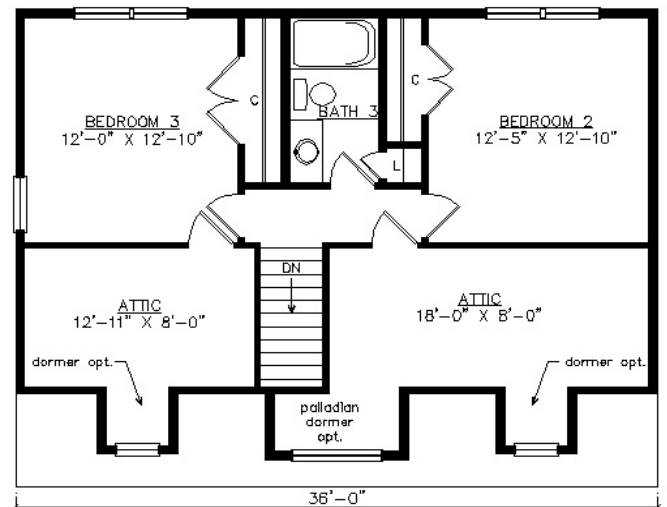
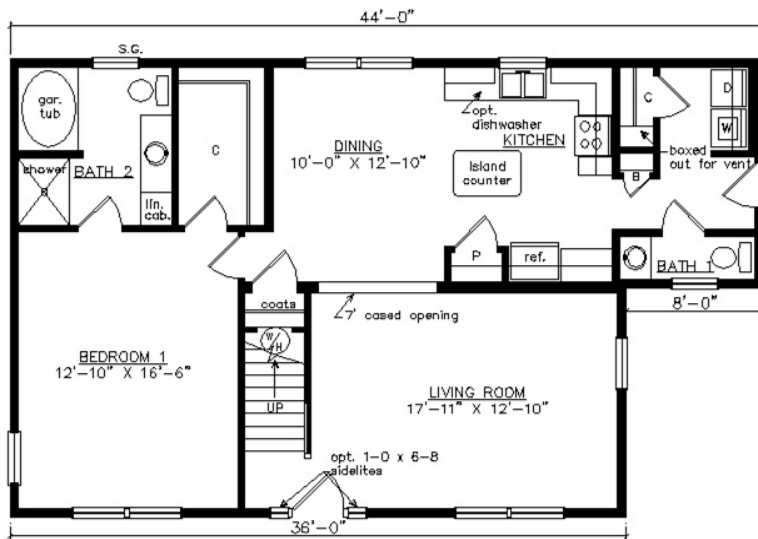
OXFORD SALTBOX CAPE

28'1" x 44'

1619 SQ. FT. (FINISHED) / 319 SQ. FT. (UNFINISHED)

BEDROOMS: 3 BATHS: 2.5

SHOWN WITH OPTIONAL PORCH,
FANLITE DOOR, DOOR SIDELITES AND DORMERS



Virginia Homes
Building Systems

www.virginiahomesbuildingsystems.com

A Division of Modular Building Systems of PA



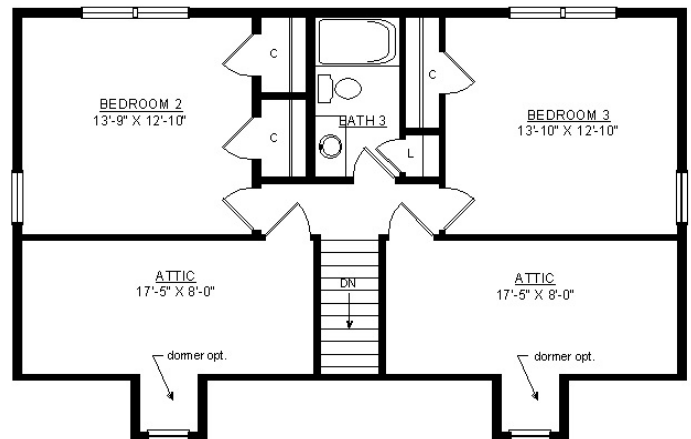
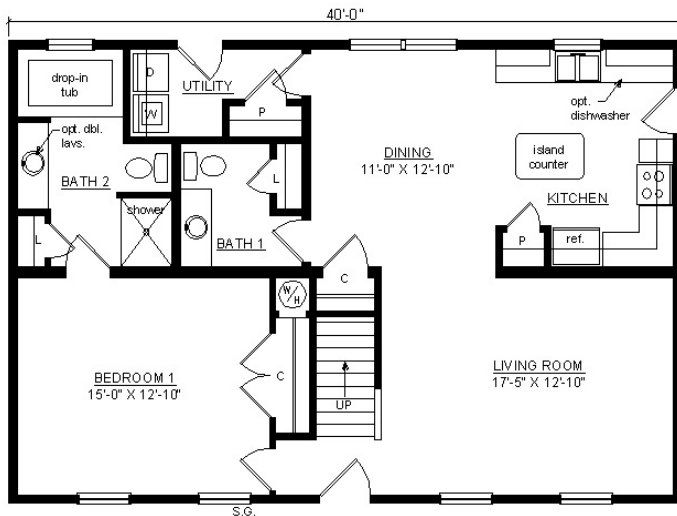
WEDGEPORT SALTBOX CAPE

28'1" x 40'

1672 SQ. FT. (FINISHED) / 343 SQ. FT. (UNFINISHED)

BEDROOMS: 3 BATHS: 2.5

SHOWN WITH OPTIONAL STOOP,
FANLITE DOOR AND DORMERS



Virginia Homes
Building Systems

www.virginiahomesbuildingsystems.com

A Division of Modular Building Systems of PA



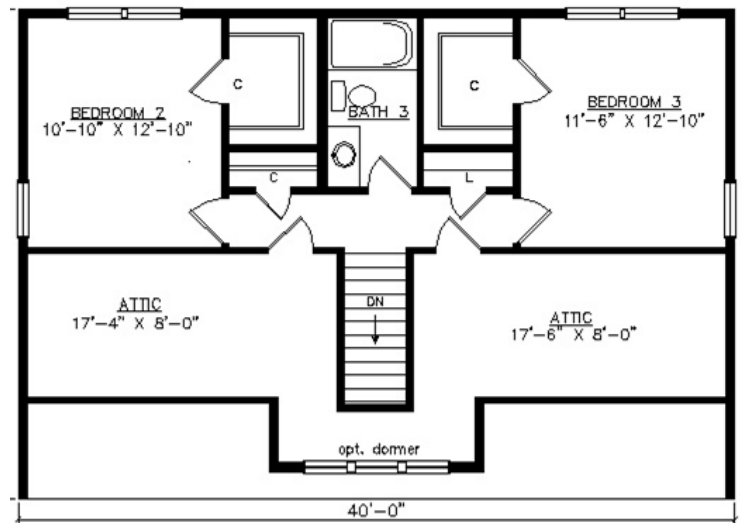
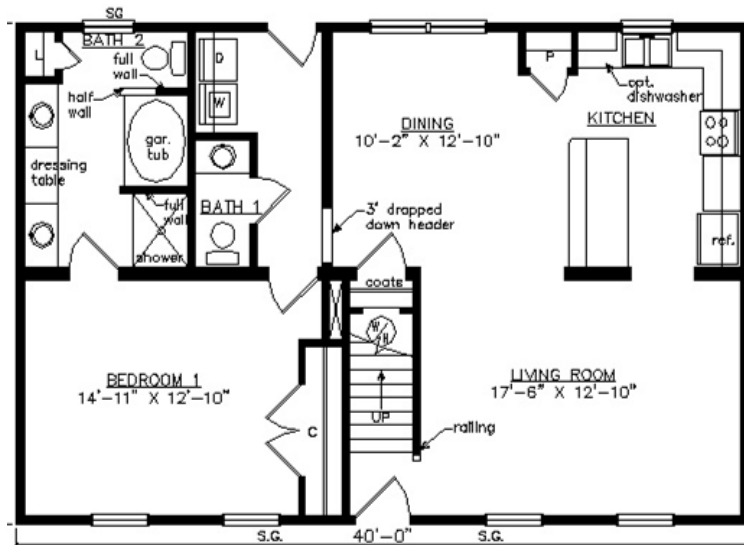
MIDLOTHIAN SALTBOX CAPE

28'1" x 40'

1672 SQ. FT. (FINISHED) / 355 SQ. FT. (UNFINISHED)

BEDROOMS: 3 BATHS: 2.5

SHOWN WITH OPTIONAL PORCH, CRAFTSMAN WINDOWS,
CRAFTSMAN DOOR AND DORMER



Virginia Homes
Building Systems

www.virginiahomesbuildingsystems.com

A Division of Modular Building Systems of PA



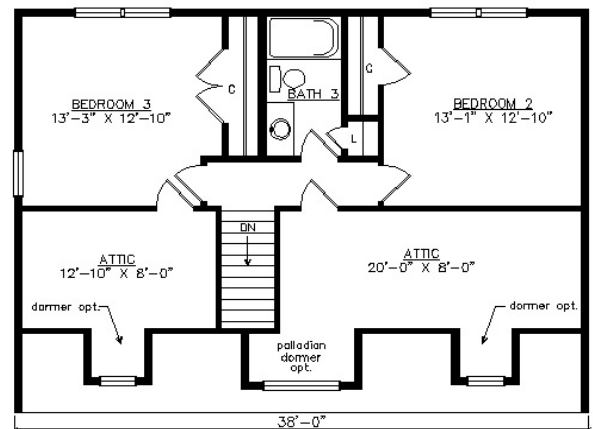
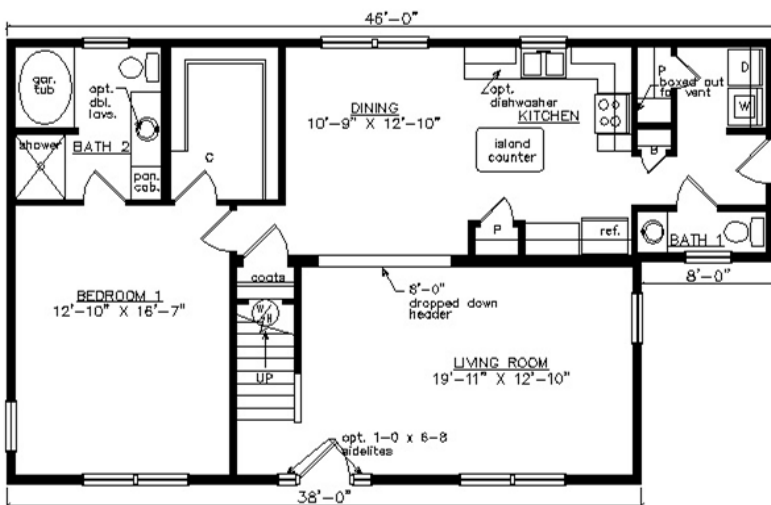
NORTHAMPTON SALT BOX

28'1" x 46'

1697 SQ. FT. (FINISHED) / 338 SQ. FT. (UNFINISHED)

BEDROOMS: 3 BATHS: 2.5

SHOWN WITH OPTIONAL PORCH,
FANLITE DOOR, DOOR SIDELITES AND DORMERS



Virginia Homes
Building Systems

www.virginiahomesbuildingsystems.com

A Division of Modular Building Systems of PA



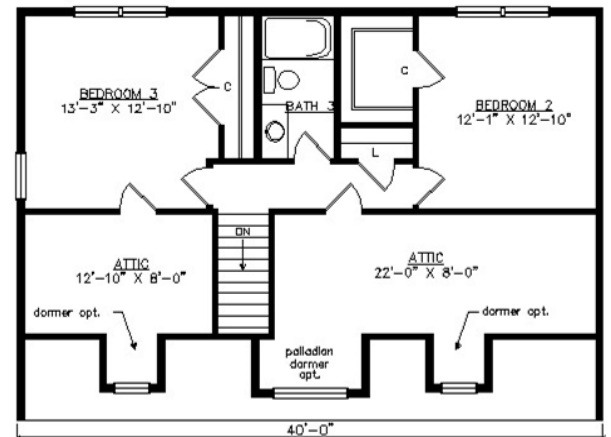
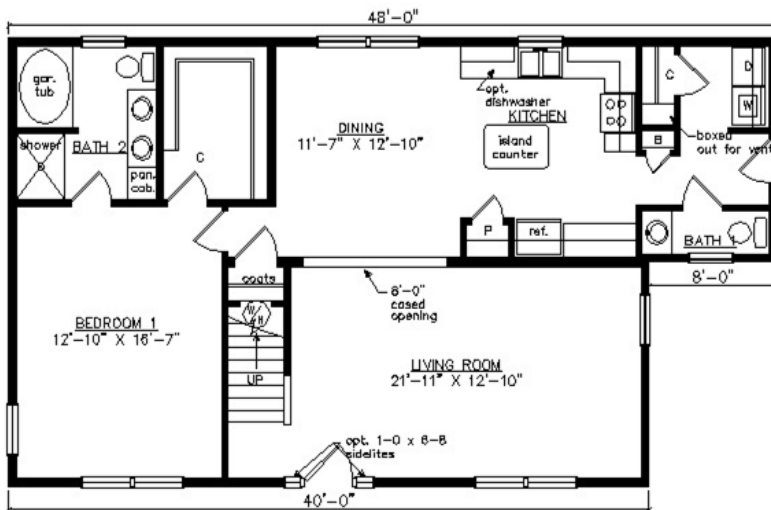
SOUTHAMPTON SALT BOX

28'1" x 48'

1780 SQ. FT. (FINISHED) / 355 SQ. FT. (UNFINISHED)

BEDROOMS: 3 BATHS: 2.5

SHOWN WITH OPTIONAL PORCH,
FANLITE DOOR, DOOR SIDELITES AND DORMERS



Virginia Homes
Building Systems

www.virginiahomesbuildingsystems.com

A Division of Modular Building Systems of PA



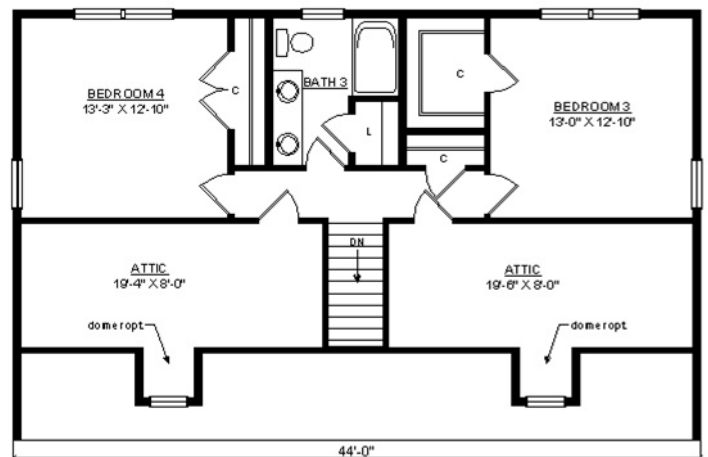
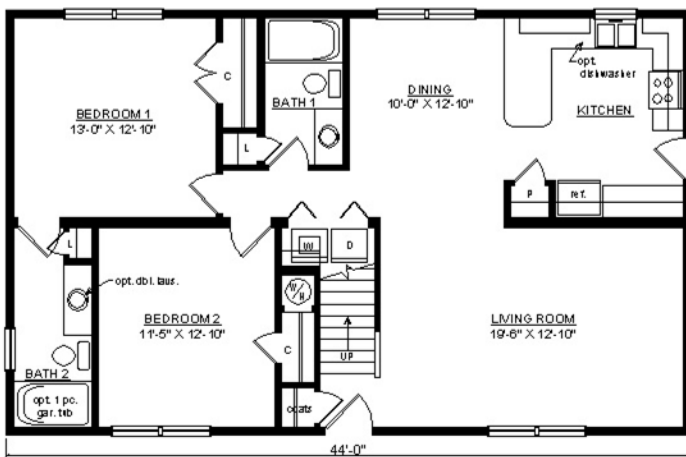
BAYPORT SALTBOX

28'1" x 44'

1839 SQ. FT. (FINISHED) / 388 SQ. FT. (UNFINISHED)

BEDROOMS: 4 BATHS: 3

SHOWN WITH OPTIONAL PORCH,
FANLITE DOOR AND DORMERS



Virginia Homes
Building Systems

www.virginiahomesbuildingsystems.com

A Division of Modular Building Systems of PA



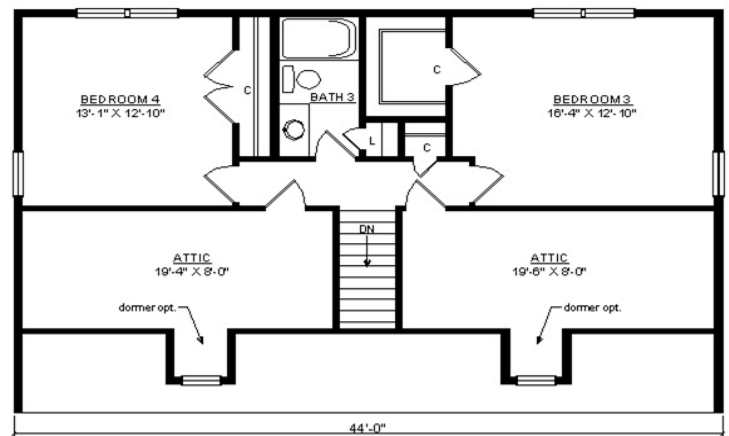
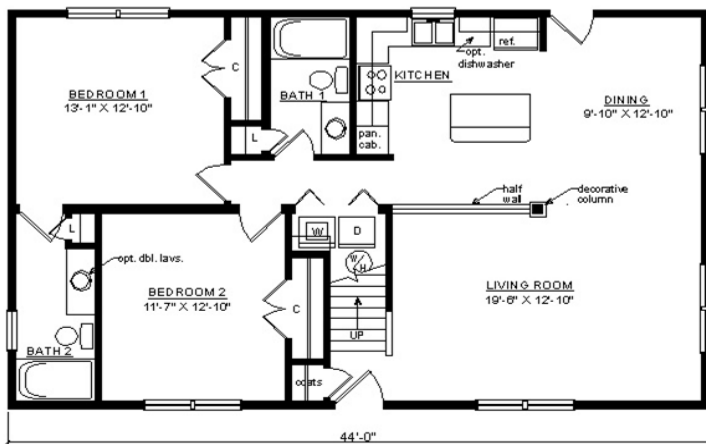
KINGSPORT SALTBOX

28'1" x 44'

1839 SQ. FT. (FINISHED) / 388 SQ. FT. (UNFINISHED)

BEDROOMS: 4 BATHS: 3

SHOWN WITH OPTIONAL PORCH,
FANLITE DOOR AND DORMERS



Virginia Homes
Building Systems

www.virginiahomesbuildingsystems.com

A Division of Modular Building Systems of PA



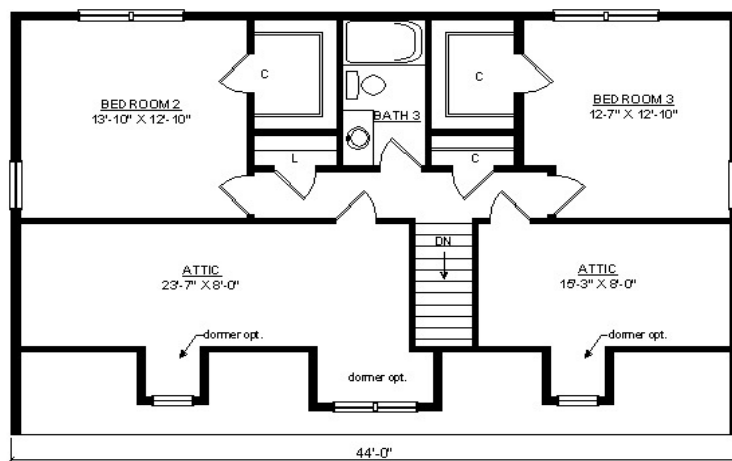
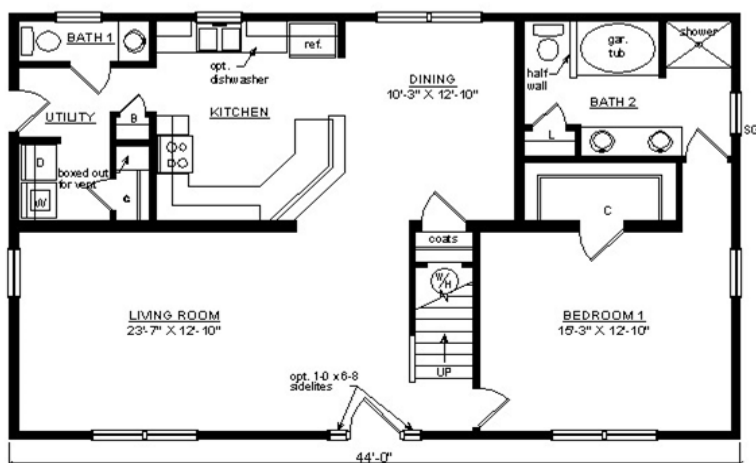
CHATHAM SALT BOX

28'1" x 44'

1839 SQ. FT. (FINISHED) / 391 SQ. FT. (UNFINISHED)

BEDROOMS: 3 BATHS: 2.5

SHOWN WITH OPTIONAL PORCH,
FANLITE DOOR AND DORMERS



Virginia Homes
Building Systems

www.virginiahomesbuildingsystems.com

A Division of Modular Building Systems of PA



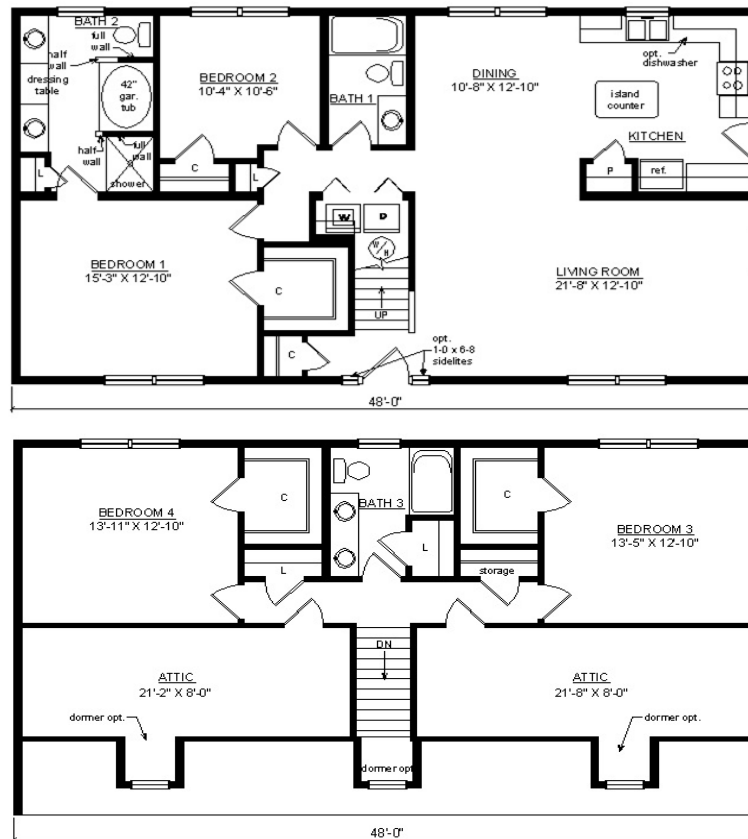
ROCKPORT SALT BOX

28'1" x 48'

2006 SQ. FT. (FINISHED) / 426 SQ. FT. (UNFINISHED)

BEDROOMS: 4 BATHS: 3

SHOWN WITH OPTIONAL PORCH,
FANLITE DOOR, DOOR SIDELITES AND DORMERS



Virginia Homes
Building Systems

www.virginiahomesbuildingsystems.com

A Division of Modular Building Systems of PA



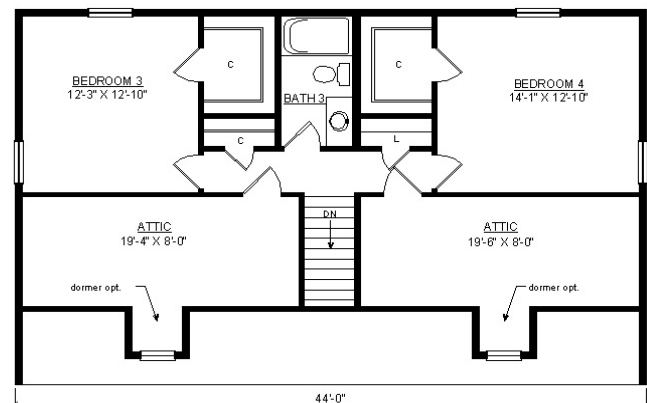
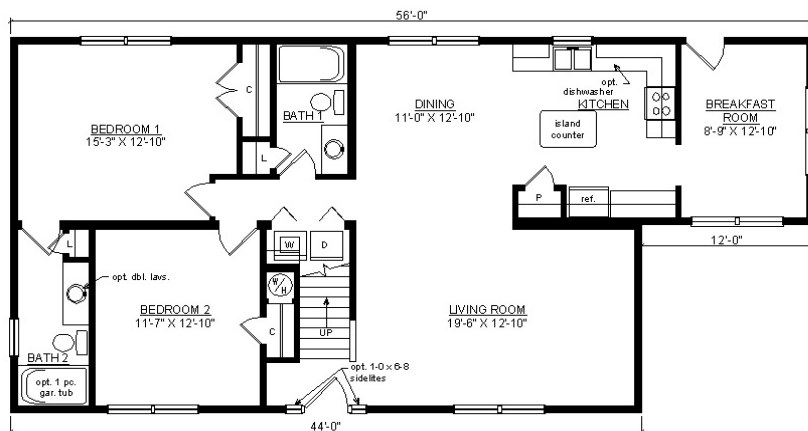
NEWPORT SALTBOX

28'1" x 56'

2115 SQ. FT. (FINISHED) / 385 SQ. FT. (UNFINISHED)

BEDROOMS: 4 BATHS: 3

SHOWN WITH OPTIONAL PORCH,
FANLITE DOOR, ACCENT SHAKES AND DORMERS



Virginia Homes
Building Systems

www.virginiahomesbuildingsystems.com

A Division of Modular Building Systems of PA



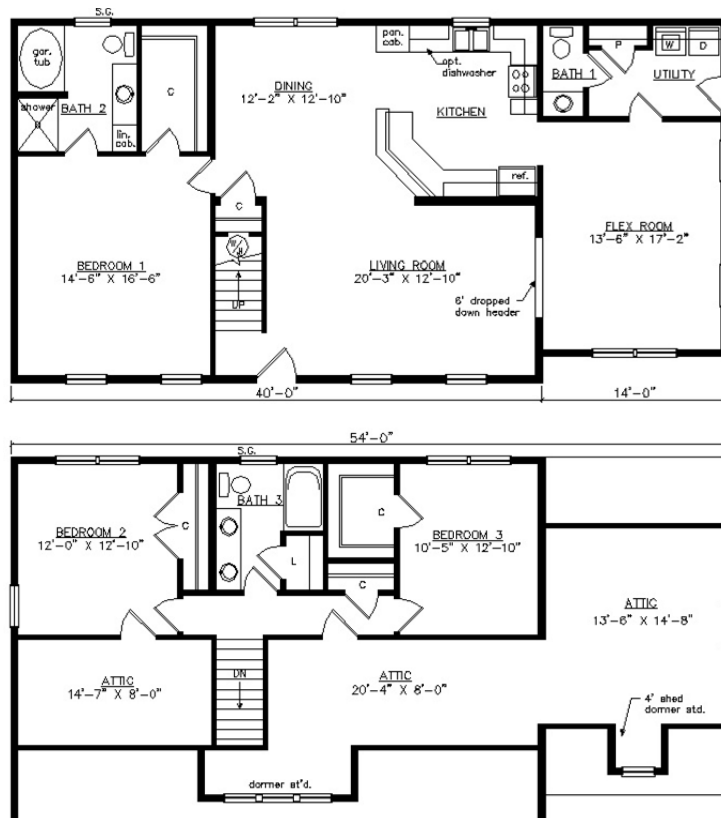
POWHATAN SALTBOX

28'1" x 54'

2038 SQ. FT. (FINISHED) / 569 SQ. FT. (UNFINISHED)

BEDROOMS: 3 BATHS: 2.5

SHOWN WITH OPTIONAL PORCH,
CRAFTSMAN DOOR AND DORMERS



Virginia Homes
Building Systems

www.virginiahomesbuildingsystems.com

A Division of Modular Building Systems of PA



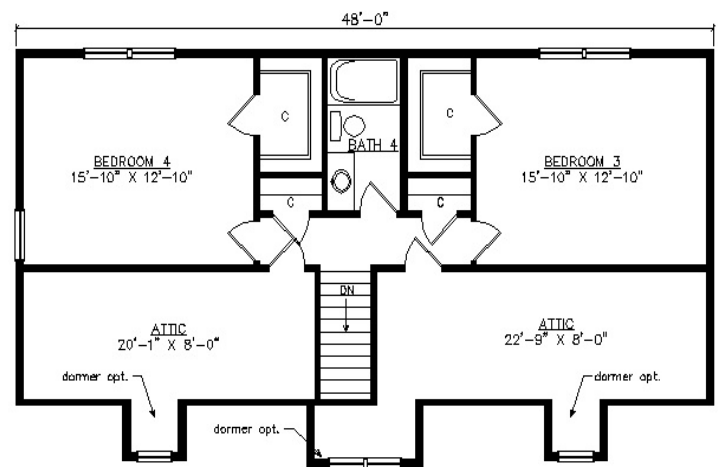
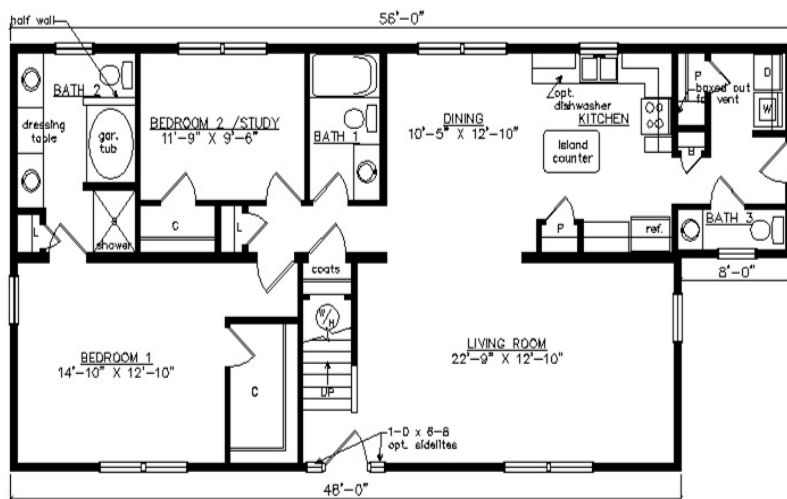
CAROLINA SALT BOX

28'1" x 56'

2113 SQ. FT. (FINISHED) / 426 SQ. FT. (UNFINISHED)

BEDROOMS: 4 BATHS: 3.5

SHOWN WITH OPTIONAL PORCH, FAN LITE DOOR,
DOOR SIDELITES AND DORMERS



Virginia Homes
Building Systems

www.virginiahomesbuildingsystems.com

A Division of Modular Building Systems of PA



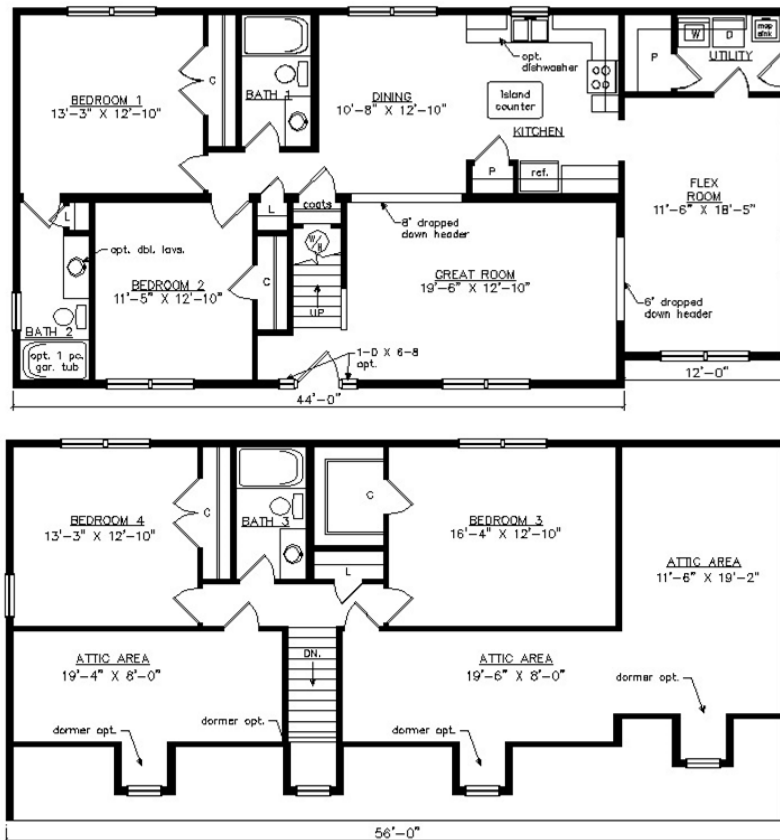
NEW HARBOR SALT BOX

28'1" x 56'

2142 SQ. FT. (FINISHED) / 632 SQ. FT. (UNFINISHED)

BEDROOMS: 4 BATHS: 3

SHOWN WITH OPTIONAL STOOP, FAN LITE DOOR,
DOOR SIDELITES AND DORMERS



Virginia Homes
Building Systems

www.virginiahomesbuildingsystems.com

A Division of Modular Building Systems of PA



AMELIA SALT BOX

28'1" x 56'

2142 SQ. FT. (FINISHED) / 632 SQ. FT. (UNFINISHED)

BEDROOMS: 4 BATHS: 3

SHOWN WITH OPTIONAL PORCH, CRAFTSMAN DOOR,
DOOR SIDELITES AND SHED DORMER



Virginia Homes
Building Systems

www.virginiahomesbuildingsystems.com

A Division of Modular Building Systems of PA



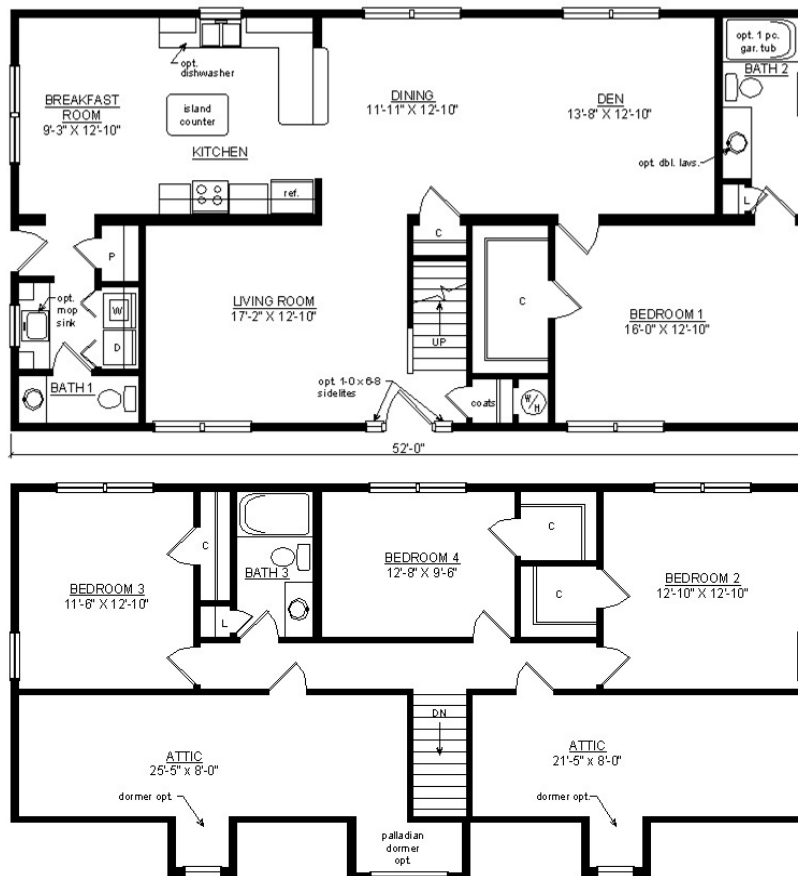
BRIDGEPORT SALTBOX

28'1" x 52'

2174 SQ. FT. (FINISHED) / 446 SQ. FT. (UNFINISHED)

BEDROOMS: 4 BATHS: 2.5

SHOWN WITH OPTIONAL PORCH,
FANLITE DOOR, DOOR SIDELITES AND DORMERS



Virginia Homes
Building Systems

www.virginiahomesbuildingsystems.com

A Division of Modular Building Systems of PA



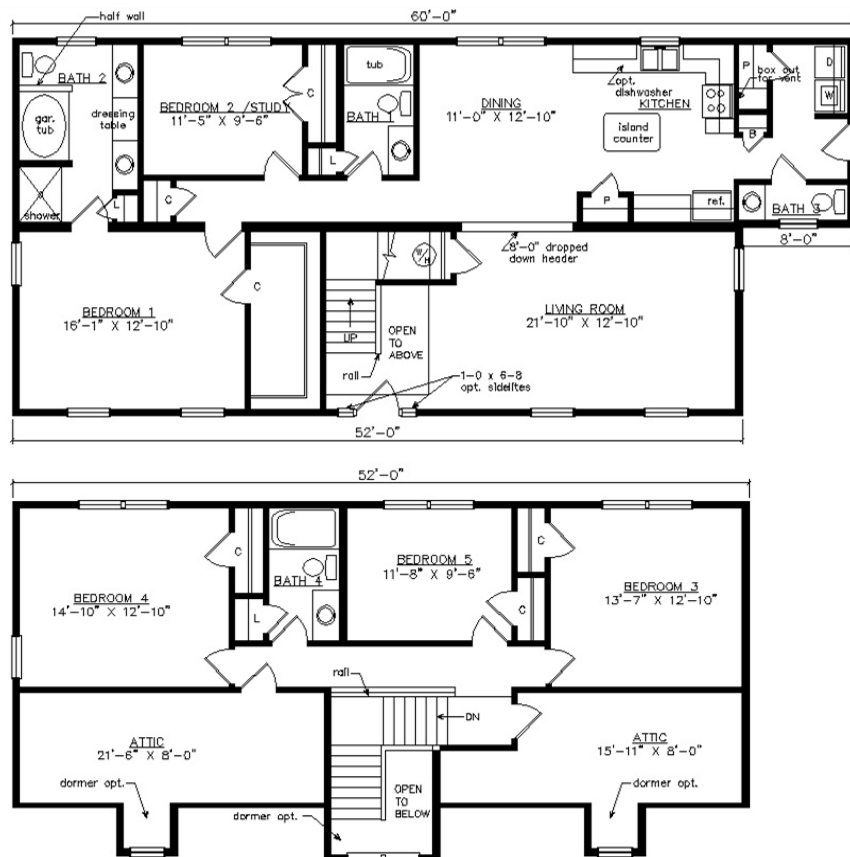
HALIFAX SALT BOX

27'6" x 60'

2255 SQ. FT. (FINISHED) / 440 SQ. FT. (UNFINISHED)

BEDROOMS: 5 BATHS: 3.5

SHOWN WITH OPTIONAL PORCH, FAN LITE DOOR,
DOOR SIDELITES AND DORMERS



Virginia Homes
Building Systems

A Division of Modular Building Systems of PA



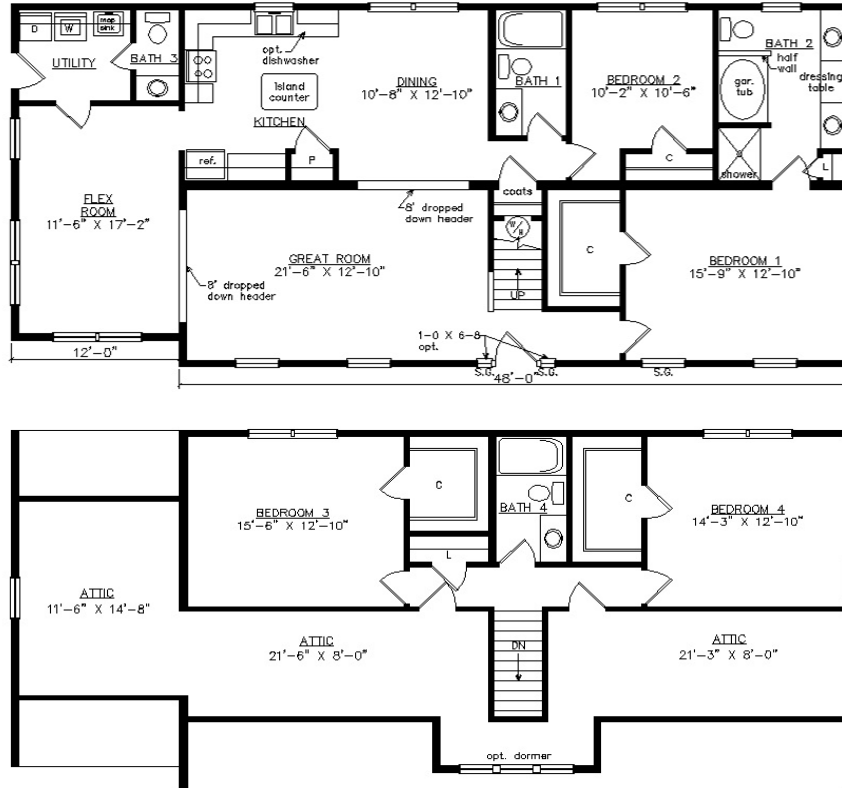
GOOCHLAND SALT BOX

28'1" x 60'

2308 SQ. FT. (FINISHED) / 616 SQ. FT. (UNFINISHED)

BEDROOMS: 4 BATHS: 3.5

SHOWN WITH OPTIONAL PORCH, CRAFTSMAN DOOR
DOOR SIDELITES AND DORMER



Virginia Homes
Building Systems

www.virginiahomesbuildingsystems.com

A Division of Modular Building Systems of PA



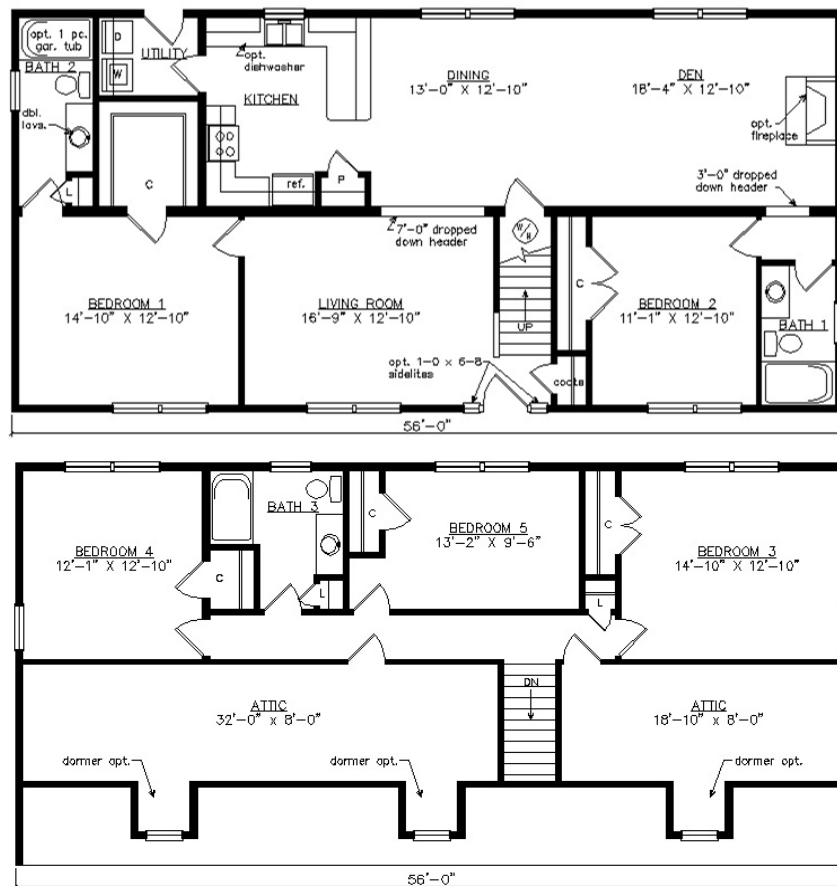
FREEPORT SALTBOX

28'1" x 56'

2340 SQ. FT. (FINISHED) / 498 SQ. FT. (UNFINISHED)

BEDROOMS: 5 BATHS: 3

SHOWN WITH OPTIONAL PORCH AND DORMERS



Virginia Homes
Building Systems

www.virginiahomesbuildingsystems.com

A Division of Modular Building Systems of PA